

INDEX**CONTACT INFORMATION**

- Production Staff Contact Information
- Mailing Address
- Civic Center Web Site
- Des Moines Area Map
- Downtown Des Moines Map
- Des Moines Information
- Civic Center Location

FLOORPLANS

- Building
- Stage Level
- Lower Level
- Seating Layout

STAGE AREA

- Loading Dock information
- Stage Dimensions
- Stage Floor
- Orchestra Pit

CARPENTRY

- Counterweight System
- Curtains
- Hanging Plot

ELECTRICS

- Company Disconnects
- Lighting Control Console
- Dimmers
- Road Show Transfer Patch
- Followspots
- Lighting Equipment Inventory
- Cable
- Color

AUDIO

- Mixing Console
- Snakes
- Processing Equipment
- Loudspeaker System and Monitors
- Snake lengths for Sound Kill positions
- Microphones
- Intercom System
- Infrared System

WARDROBE

- Wardrobe Room
- Dressing Rooms

COMPANY and STAGE MANAGER INFORMATION

- Stage Manager Console
- Telephones
- Internet and DSL
- Green Room

OTHER

- Risers
- Orchestra Chairs and Music Stands
- Pianos
- Lifts and Ladders

CONTACT INFORMATION

Production Director.....Brian Anstedt.....515-246-2331.....banstedt@civiccenter.org
 Head Carpenter.....Nicholas Romano.....515-246-2332.....nromano@civiccenter.org
 Head Electrician.....Al Dyer.....515-246-2333.....adyer@civiccenter.org
 Head Audio/Asst. Production Mgr.....Greg Tracy.....515-246-2334.....gtracy@civiccenter.org
 I.A.T.S.E. Local 67.....Ryan Anderson, Business Agent.....515-707-8567
 A.F. of M. Local 75.....Harold Jansen, Contractor.....515-279-1843

CIVIC CENTER MAILING ADDRESS

Civic Center of Greater Des Moines
 221 Walnut St.
 Des Moines, IA. 50309

CIVIC CENTER WEB SITE

www.civiccenter.org

DES MOINES AREA MAP

<http://map.mapnetwork.com/destination/desmoines/metro/>

DOWNTOWN DES MOINES MAP

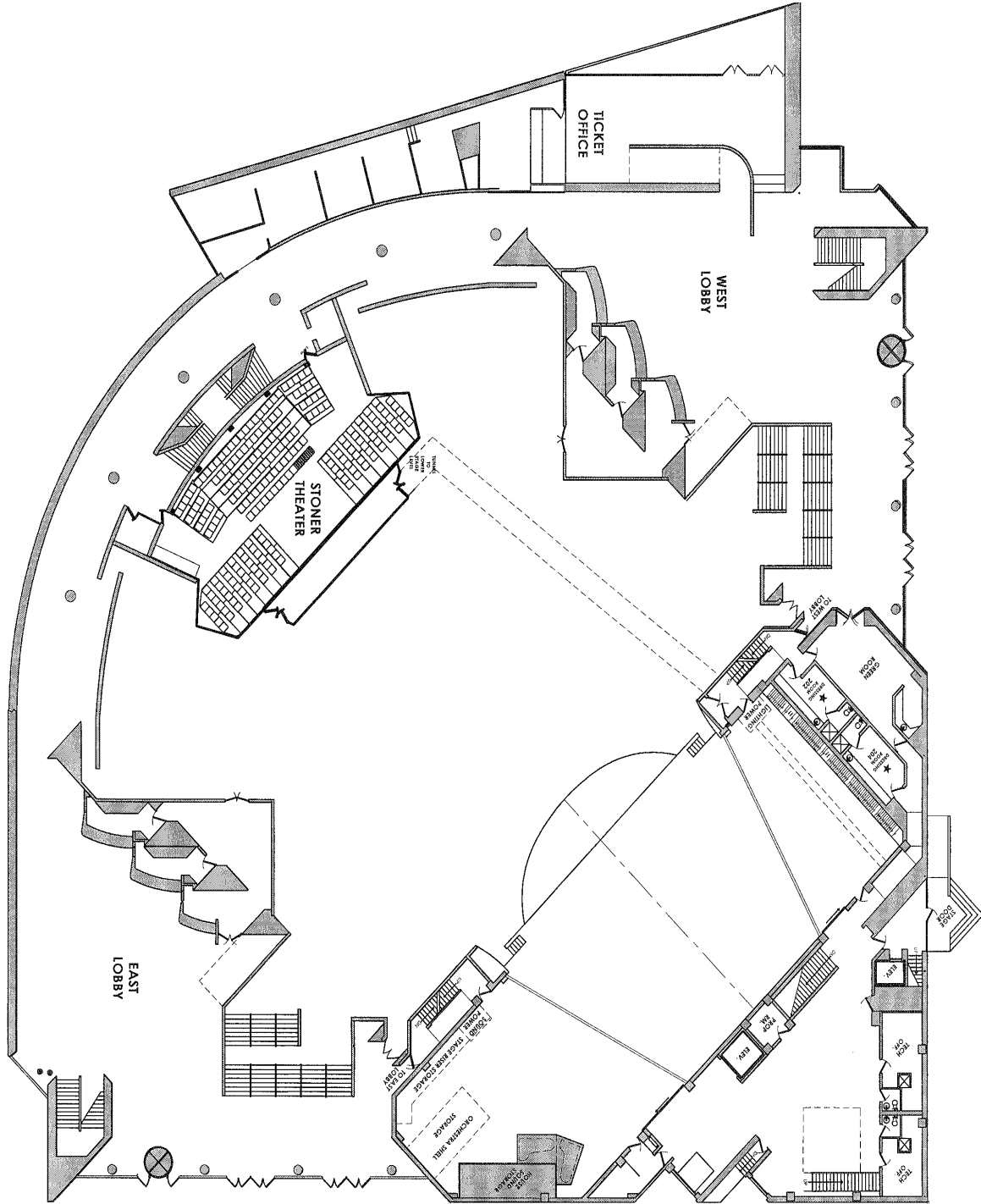
<http://map.mapnetwork.com/destination/desmoines/>

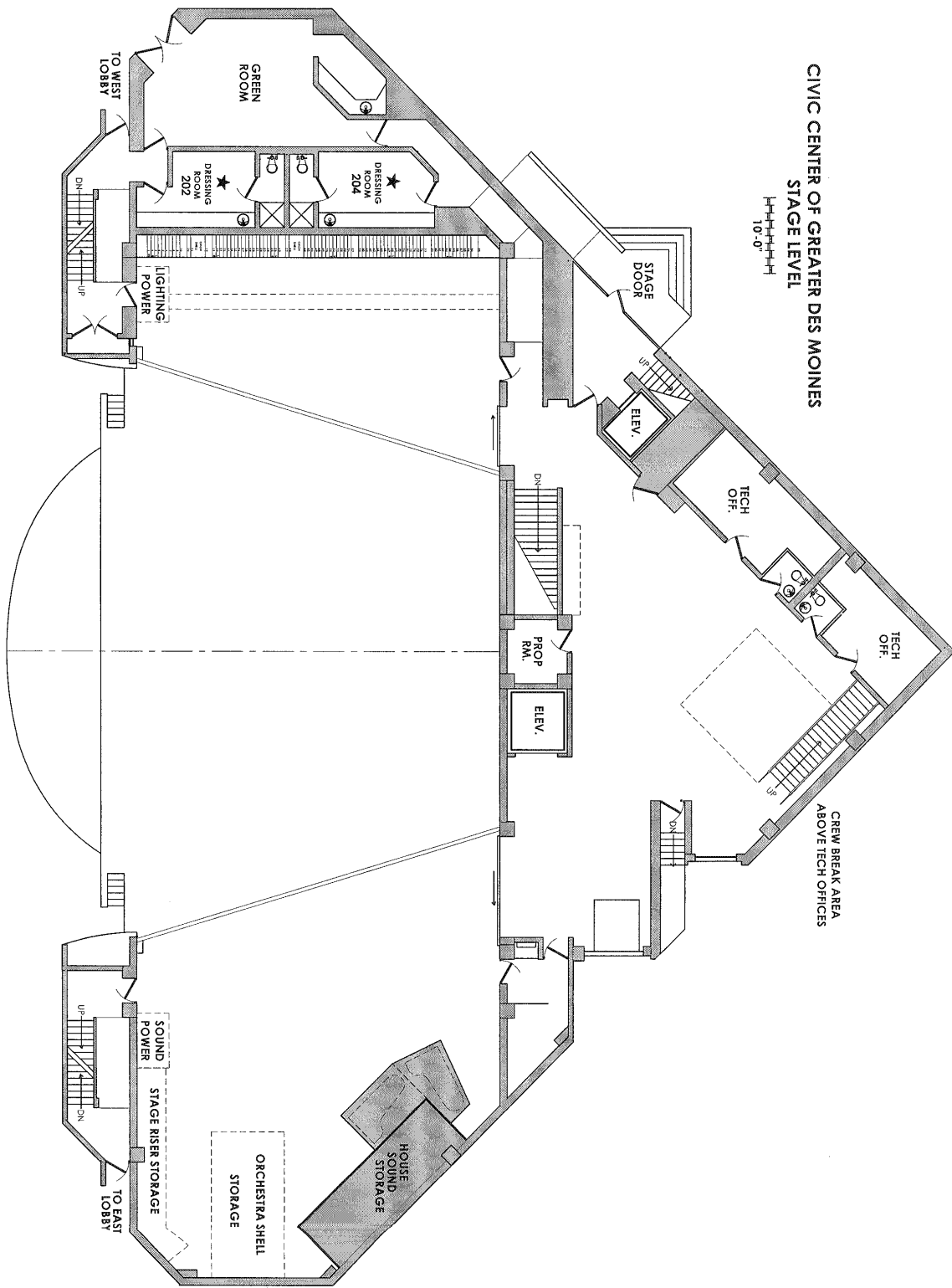
DES MOINES INFORMATION

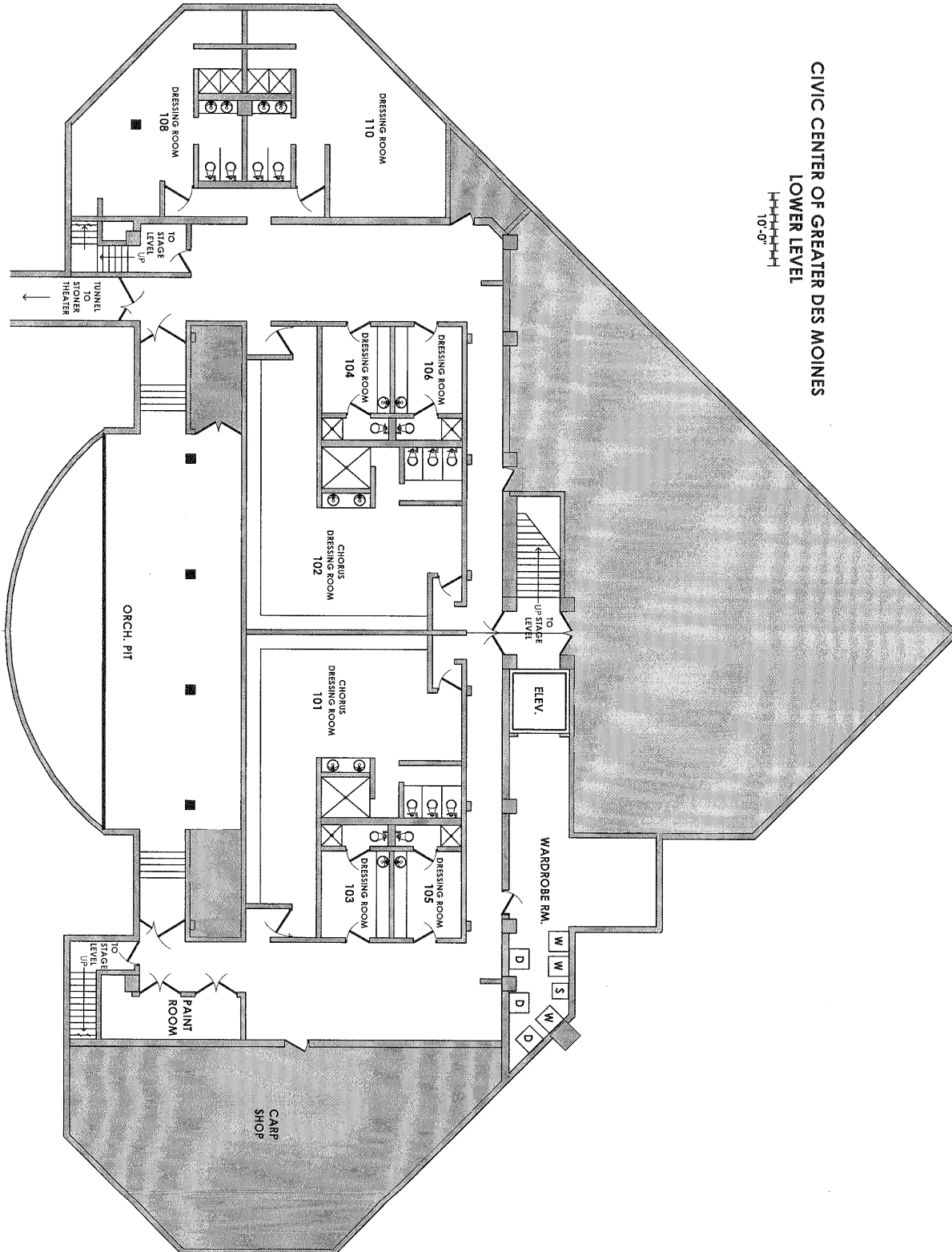
www.seedesmoines.com

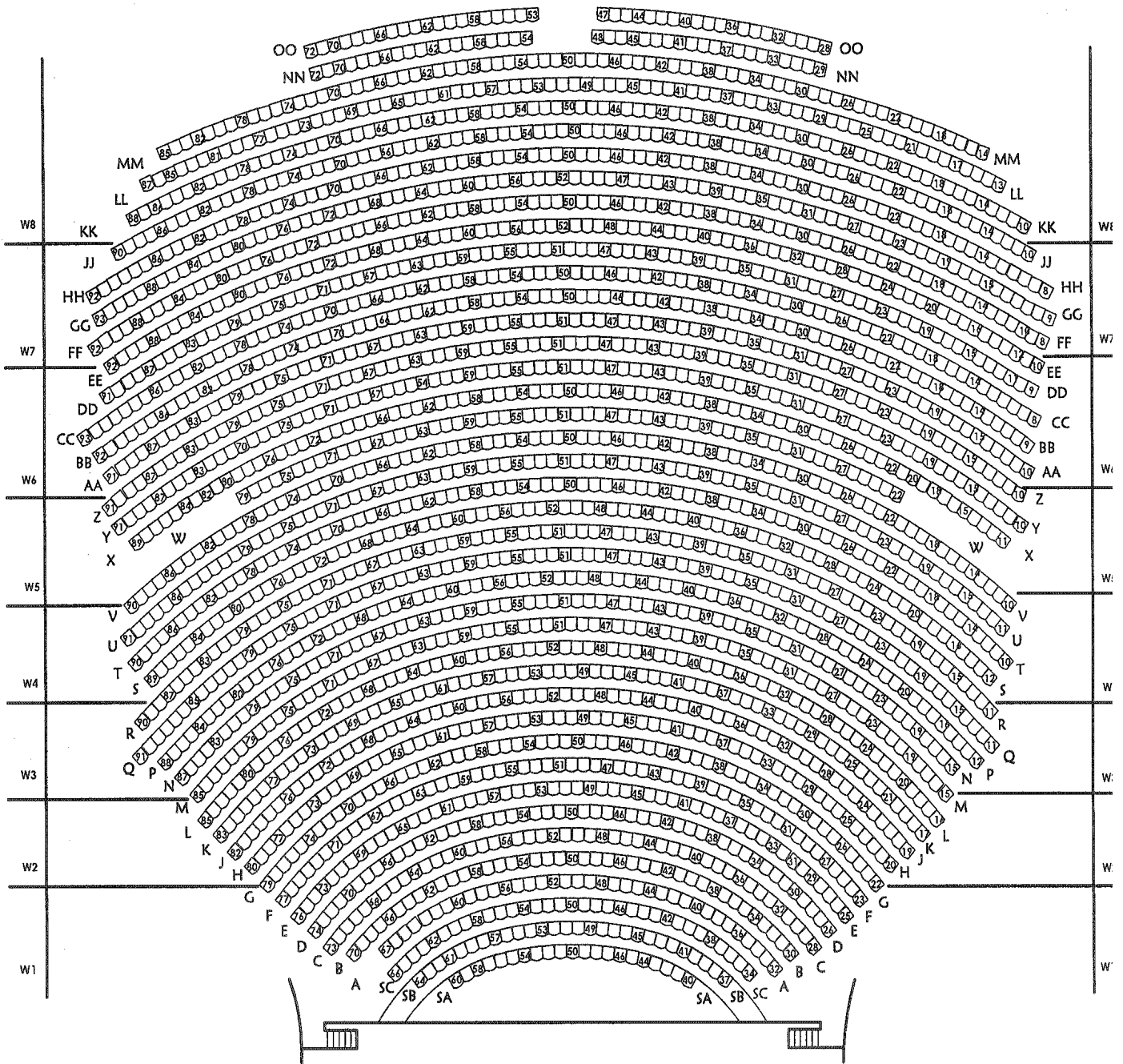
CIVIC CENTER LOCATION

The Civic Center of Greater Des Moines is located between Locust St. and Walnut St. and 2nd Ave. and 3rd St.
 The loading docks are located on the north side of the building.









STAGE AREA

LOADING DOCKS

There are two loading docks located backstage (upstage left) located on Locust St between 2nd Ave. and 3rd St.

Main dock	Height.....	9'-5½"
	Width.....	7'-11½"
Second dock	Height.....	8'-6"
	Width.....	5'-9"

The docks are at proper trailer height and the main dock is equipped with a leveler. Dock level is the same as stage level.

SCENERY DOORS

There are two scenery doors that provide access to the stage from the loading dock area. The doors are located upstage on the back wall. When closed, the scenery doors enable the stage to be acoustically sealed-off from the loading dock and backstage areas.

Stage Left	Height.....	30'-6"
	Width.....	13'-6"
Stage Right	Height.....	12'-4"
	Width.....	8'-9"

STAGE DIMENSIONS

Proscenium Width.....	76'-0"
Proscenium Height	28'-0"
Centerline to Stage Right Fly Rail.....	53'-0"
(fly rail extends 3'-6 from SR wall)	
Centerline to Stage Left wall.....	85'-0"
Apron Lip to Back (Upstage) wall	55'-0"
(apron is straight - runs parallel to curtain line)	
House Curtain Line to Upstage wall	49'-0"
House Curtain Line to Apron lip.....	6'-0"
Height of stage floor from house floor.....	3'-5¾"

STAGE FLOOR

The stage floor is wood composed of two layers of multi-fiber medium density fiber board laid on top of Neoprene 1" pads. Each layer of the fiber board floor has been laid with staggered joints to the other which reinforces the floor.

There are no stage traps or elevators in the stage floor.

The color of the stage floor is a very dark gray almost black.

ORCHESTRA PIT

The orchestra pit consists of an inner and outer lift run by a spiral lift and can move from stage level down to the pit level of 8'-8". The inner pit alone will hold 20 musicians and both pits together will hold 50 musicians.

CARPENTRY

COUNTERWEIGHT SYSTEM

The counterweight system is a single purchase system. The system, new in the summer of 2006, has a 1,500 lb. per line set capacity and includes schedule 80 pipes.

GRID

Grid height above stage floor..... 70'
Height above grid to roof 8'
Access to grid is by ladder from either stage right or stage left hemp gallery bridges.
Grid is composed of steel grating on I-beams.
There is a hatch up stage right with a 1-ton motor for lifting to the grid or unstacking road boxes.

HEMP GALLERIES

Stage Right
Distance from Centerline to gallery bridge 43'-6"
Height of gallery bridge from stage floor 28'-6"
Height of gallery pin rail from stage floor..... 35'-0"
Gallery bridge extends 12'-6 from stage right wall

Stage Left
Distance from Centerline to gallery bridge 43'-6"
Height of gallery bridge from stage floor 46'-5"
Height of gallery pin rail from stage floor..... 51'-1"
Gallery bridge extends 4'-6 from stage left wall

LOADING BRIDGE

Counterweight loading bridge is located stage right.
Height of loading bridge from stage floor..... 62'-0"
Loading bridge extends 8'-6 from stage right wall.
Counterweight available for show use on loading bridge is approximately 30,000 pounds.

CURTAIN INFORMATION

Main House Curtain

The main house curtain works immediately upstage of the proscenium and fire curtain. The curtain is 81' wide x 32' tall. The curtain is a **guillotine type only** and is manually operated. It does not have center split nor can it be opened on the side. It is a light gray cotton velour with 100% fullness. The curtain is mounted on a wire guide and cannot be removed from the line set.

All masking curtains are black Encore fabric with no fullness.

Masking Borders

- (6) 60' wide x 12' tall. Pipe hem in bottom.
- (1) 80' wide x 12' tall. Pipe hem in bottom.

Masking Legs

- (6 pair) 18' wide x 32' tall. Pipe hem in bottom.

Blackout Curtains

- (1) 60' wide x 32' tall. Pipe hem in bottom.
- (2) 30' wide x 32' tall. Pipe hem in bottom.
- (1) 80' wide x 32' tall. Sewn chain hem in bottom.
- (1) 60' wide x 32' tall. Sewn chain hem in bottom.

Curtain Information continued

Scrim Curtains

- (1) White sharkstooth scrim 66' wide x 28' tall. Pipe hem in bottom.
- (1) Black sharkstooth scrim 66' wide x 28' tall. Pipe hem in bottom.
- (1) White Leno Cyc 70' wide x 30' tall. Pipe hem in bottom.

HANGING PLOT

Set #	Distance From Proscenium	Distance From Curt Line	Distance From Show 0'-0"	Batten Length	Civic Center House Stock	Show/Production Stock
P	0'-0	(1'-6)			Proscenium	Proscenium
A	0'-6	(1'-0)			Fire Curtain	Fire Curtain
A	1'-0	(0'-6)			Fire Curtain	Fire Curtain
1	1'-6	0'-0		86'	<u>House Main Curtain</u>	House Main Curtain
2	2'-0	0'-6	_____	86'	<u>#1 Border</u>	_____
3	2'-6	1'-0	_____	86'	<u>#1 Legs</u>	_____
4	3'-0	1'-6	_____	66'	available set	_____
5	3'-6	2'-0	_____	66'	available set	_____
6	4'-0	2'-6	_____	66'	available set	_____
7	4'-6	3'-0	_____	66'	available set	_____
8	5'-0	3'-6	_____	66'	available set	_____
9	5'-6	4'-0	_____	66'	available set	_____
10	6'-0	4'-6	_____	66'	available set	_____
11	6'-6	5'-0	_____	66'	available set	_____
12	7'-0	5'-6	_____	66'	available set	_____
13	7'-6	6'-0	_____	66'	available set	_____
14	8'-0	6'-6		FIXED	<u>Orch Ceiling Trip</u>	NOT AVAILABLE
	8'-6	7'-0		FIXED	<u>#1 Orchestra Ceiling</u>	NOT AVAILABLE
	9'-0	7'-6			<u>Orch Ceiling Overlap</u>	NOT AVAILABLE
17	9'-6	8'-0	_____	66'	available set	_____
	10'-0	8'-6			Outtrigger Bracket	NOT AVAILABLE
19	10'-6	9'-0	_____	66'	<u>#2 Border</u>	_____
20	11'-0	9'-6	_____	86'	<u>#2 Legs</u>	_____
21	11'-6	10'-0	_____	66'	available set	_____
22	12'-0	10'-6	_____	66'	available set	_____
23	12'-6	11'-0	_____	66'	available set	_____
24	13'-0	11'-6	_____	66'	available set	_____
25	13'-6	12'-0	_____	66'	available set	_____
26	14'-0	12'-6	_____	66'	available set	_____
27	14'-6	13'-0	_____	66'	available set	_____
28	15'-0	13'-6	_____	66'	available set	_____
29	15'-6	14'-0	_____	66'	available set	_____
30	16'-0	14'-6	_____	66'	available set	_____
31	16'-6	15'-0	_____	66'	available set	_____
32	17'-0	15'-6	_____	66'	available set	_____
33	17'-6	16'-0	_____	66'	available set	_____
34	18'-0	16'-6	_____	66'	available set	_____
35	18'-6	17'-0	_____	66'	<u>#3 Border</u>	_____
36	19'-0	17'-6	_____	86'	<u>#3 Legs</u>	_____
37	19'-6	18'-0	_____	66'	available set	_____
	20'-0	18'-6			Outtrigger Bracket	NOT AVAILABLE

Set #	Distance from Proscenium	Distance from Curt Line	Distance from Portal	Batten Length	Civic Center House Stock	Show/Production Stock
39	20'-6	19'-0	_____	66'	available set	_____
40	21'-0	19'-6	_____	66'	available set	_____
41	21'-6	20'-0	_____	FIXED	<u>Orch Ceiling Trip</u>	NOT AVAILABLE
	22'-0	20'-6	_____	FIXED	<u>#2 Orchestra Ceiling</u>	NOT AVAILABLE
	22'-6	21'-0	_____		<u>Orch Ceiling Overlap</u>	NOT AVAILABLE
44	23'-0	21'-6	_____	66'	available set	_____
45	23'-6	22'-0	_____	66'	available set	_____
46	24'-0	22'-6	_____	66'	available set	_____
47	24'-6	23'-0	_____	66'	available set	_____
48	25'-0	23'-6	_____	66'	available set	_____
49	25'-6	24'-0	_____	66'	available set	_____
50	26'-0	24'-6	_____	66'	available set	_____
51	26'-6	25'-0	_____	66'	<u>#4 Border</u>	_____
52	27'-0	25'-6	_____	86'	<u>#4 Legs</u>	_____
53	27'-6	26'-0	_____	66'	available set	_____
54	28'-0	26'-6	_____	66'	available set	_____
55	28'-6	27'-0	_____	66'	available set	_____
56	29'-0	27'-6	_____	66'	available set	_____
57	29'-6	28'-0	_____	66'	available set	_____
	30'-0	28'-6	_____		<u>Outrigger Bracket</u>	NOT AVAILABLE
59	30'-6	29'-0	_____	66'	available set	_____
60	31'-0	29'-6	_____	66'	available set	_____
61	31'-6	30'-0	_____	66'	available set	_____
62	32'-0	30'-6	_____	66'	available set	_____
63	32'-6	31'-0	_____	66'	available set	_____
64	33'-0	31'-6	_____	66'	available set	_____
65	33'-6	32'-0	_____	66'	available set	_____
66	34'-0	32'-6	_____	66'	available set	_____
67	34'-6	33'-0	_____	66'	<u>#5 Border</u>	_____
68	35'-0	33'-6	_____	86'	<u>#5 Legs</u>	_____
69	35'-6	34'-0	_____	66'	available set	_____
70	36'-0	34'-6	_____	66'	available set	_____
71	36'-6	35'-0	_____	66'	available set	_____
72	37'-0	35'-6	_____	66'	available set	_____
73	37'-6	36'-0	_____	66'	available set	_____
74	38'-0	36'-6	_____	66'	available set	_____
75	38'-6	37'-0	_____	66'	available set	_____
76	39'-0	37'-6	_____	66'	available set	_____
77	39'-6	38'-0	_____	66'	available set	_____
	40'-0	38'-6	_____		<u>Outrigger Bracket</u>	NOT AVAILABLE
79	40'-6	39'-0	_____	66'	<u>X-RAY Storage</u>	_____
80	41'-0	39'-6	_____	66'	available set	_____
81	41'-6	40'-0	_____	66'	available set	_____
82	42'-0	40'-6	_____	66'	available set	_____
83	42'-6	41'-0	_____	66'	<u>#6 Border</u>	_____
84	43'-0	41'-6	_____	86'	<u>#6 Legs</u>	_____
85	43'-6	42'-0	_____	86'	available set	_____

86	44'-0	42'-6	_____	86'	available set	_____
87	44'-6	43'-0	_____	86'	available set	_____
88	45'-0	43'-6	_____	86'	available set	_____
89	45'-6	44'-0	_____	86'	available set	_____
90	46'-0	44'-6	_____	86'	available set	_____
91	46'-6	45'-0	_____	86'	available set	_____
92	47'-0	45'-6	_____	86'	BIG BLACK	_____

50' 48'-6

BACK WALL

BACK WALL

ELECTRICS**Company disconnects**

Down stage right (2) 400 amps. Typically used for lighting.

Down stage left 200 amps. Typically used for audio.

Upstage left 200 amps. Typically used for automation or shore power.

Lighting Control Console

The house console is an ETC ELEMENT60 with 500 channels. The console can be located backstage or back of the house.

The ELEMENT is a memory/manual preset console with the following features:

- Capacity of 10,000 cues
- 500 channels preset memory operation
- 1024 dimmers
- 60 Fader, pageable as channel or submaster control
- 300 Submasters (additive or inhibitive) via integral faders
- Two timed/manual split faders
- Bump buttons on all channels and submasters
- Proportional patching
- 2 Touch screen color monitors
- Hand held focus/remote control
- USITT DMX 512 output protocol
- Moving light patch

Dimmers

The house is wired for dimmer per circuit to Strand Century CD 80 advanced electronic racks. There are 450 2.4K and 50 - 6K dimmer modules. Also available are non-dim and direct power units. Dimmers can be made available in DMX 512 protocol for control direct from road show lighting consoles.

Road Show Transfer Panel

All front-of-house lighting circuits, i.e. ceiling cove and box booms, are patched through a transfer panel that enables the circuits to appear as a cable tail for control from road show dimmer racks. It is located downstage right at stage level.

Follow spots

(4) Lycian 1290 2K Xenon follow spots located at the back of the house in a projection booth. The throw from booth to curtain line is 155' at an angle of 17 degrees. Spots are positioned 3' and 7' either side of center line.

Lighting Equipment Inventory

All instruments are wired with stage pin connectors.

Front-of-House Information and Inventory-Ceiling Coves

Cove (D Cove) is 69' out at an angle of 47 degrees

36 ETC Source Four 19 degree, 575 watt ellipsoidals

36 20 amp circuits

4 60 amp circuits

Cove (E Cove) is 94' out at an angle of 34 degrees

6 ETC Source Four 5 degree, 575 watt ellipsoidals

36 ETC Source Four 10 degree, 575 watt ellipsoidals

42 20 amp circuits

4 60 amp circuits

Front-of-House Information and Inventory continued

Box Booms - All instruments are mounted on sidearms. The throw from box boom to curtain line at center line is 60' at an angle of 50 degrees.

Box Boom - Stage Left

- 12 ETC Source Four 19 degree, 575watt ellipsoidals.
- 8 20 amp circuits
- 1 60 amp circuit

Box Boom - Stage Right

- 12 ETC Source Four 19 degree, 575watt ellipsoidals
- 8 20 amp circuits
- 1 60 amp circuit

On Stage Lighting Instrument Inventory

This listing does not include the Front-of-House Inventory described above.

- 10 ETC Source Four 50 degree, 575watt ellipsoidals
- 50 ETC Source Four 36 degree, 575watt ellipsoidals
- 40 ETC Source Four 26 degree, 575watt ellipsoidals
- 4 ETC Source Four 19 degree, 575watt ellipsoidals
- 48 ETC Source Four PARs, 575 watt
- 36 Strand Fresnelite 6" 1000w. Fresnels (with 10 available barndoors)
- 24 Strand Fresnelite 8" 2000w. Fresnels (with 10 available barndoors)
- 80 PAR 64s - lamps available: FFR/MFL, FFP/NSP, FFN/VNSP
- 24 Kliegl No. 5906 CP/CR 8' PAR 38 quartz/250W border strips - 3 circuits/5 lamps per circuit
- 10 Strand Iris 4 Cyclorama lights - 4 circuits/1 lamp per circuit. Uses 1500w. FDB lamp
- 6 Kliegl No. 3497F/12 9' T-3 cyclorama border strips - 4 circuits/3 lamps per circuit. Uses 1000w. FHM lamps and requires 60 amp cable (limited quantity available).

Lighting Hardware

A selection of hardware is available, including booms and bases, sidearms, lighting ladders, pipe stiffeners, scenery guards, double-swivel "C" clamps, and cheeseborough pipe clamps.

Lighting Cable

There are no permanently wired overhead electric sets - all line sets are bare. All electric pipes, booms, tormentors, border-strips, etc. must be cabled to circuit plug-in boxes located on the stage right cable racks. Multi cable is used for the hook-up of most production lighting requirements. Because the lighting instrumentation is cabled, the lighting designer/director is able to place electric sets wherever needed.

There are 6 circuit 12 gauge multi cable with Socapex style ends available to provide service for 5-6 Electrics, Border strips and Cyc lights, and pre-assembled cable bundles for torm/boom assemblies and cross-overs.

Jumpers and Adaptors

In addition to the cable bundles, there are cable jumpers in lengths of 100', 50', 25', 15', 10' and 5'. Also available are two-fers and mult-boxes. All stage cable is type SO and/or SJ with 2 pole, 3 wire grounding stage pin connectors. Adaptors are also available.

Cable Picks

It is house policy to not allow cable bundles to lie on the floor wherever possible. All electric cables must be picked up by spot lines. This keeps the stage floor area neat and provides a safe working environment for both artist and crew. In the event that a specific cable cannot be flown, carpet runners are available.

Color Media (Gel)

Roscolux	Substantial inventory in stock
Lee	Selected stock - Inquire for specific availability
Cinemoid	Selected stock - Inquire for specific availability

AUDIO**SOUND SYSTEM – INFORMATION AND INVENTORY*****Sound Mixing Console and Lines Available from FOH and Mid-House***

New in the summer of 2009, the house mix console is a Yamaha M7CL48 digital audio console configured with 48 mono mic/line inputs (link capable for stereo applications) and 4 Stereo line level inputs for a total of 56 channels. The console has 16 omni outputs (currently configured in 8 BUSS outs, 4 AUX outs and 4 sends to the internal effects rack. There is currently a 40 input snake running from the FOH position to the sound equipment room and an 20 channel output snake. A twenty seven (27) line snake runs from the sound room patch bay directly to the stage. There are a total of 38 lines available on and around the stage, plus the 27 channel stage box. A smaller 16 channel stage box is also available. Mid-House lines available total 50 (27 input and 23 return).

The house mix console is located in the audience at the back of the theatre on centerline, and it is not under any balcony or near any obstructions. (Refer to illustration of the house sound positions).

There are also two other audio consoles available for stage use:

- Yamaha DM2000 digital console (can cascade to M7CL or used as monitor desk)
- Soundcraft Spirit Powerstation 1200 (Powered Mixer)
- A Midas EZ Tilt is also available.

Audio Equipment Location

Audio equipment is located in the equipment rack at the house mix position and in the sound electronics room. All equipment inputs and outputs are accessible through patch panels and can easily accommodate road show interface with the house system.

Peripheral Audio Processing/Amplification Equipment

With the digital consoles available at the Civic Center, we have a limited amount of peripheral processing equipment. The following is available:

- 4 DBX 231 Dual Channel EQs*
- 1 DBX 223XL Crossover
- 2 JBL Two Way Crossovers
- 2 Crown MacroTech 1602 Amplifiers*
- 2 Crown MacroTech 2402 Amplifiers*
- 1 QSC RMX1450 Amplifier

The DBX 231 EQs and Crown MacroTech amplifiers are in separate racks for stage monitors.

Tape and Disc Machines

The following player/recording equipment is available:

- 1 Microboards Copywriter Live CD Recorder/Player
- 1 Denon DN2600F Dual Bay Compact Disc Player
- 1 JVC Dual Cassette Recorder/Player
- 1 Sony Minidisk Recorder/Player

House Loudspeakers Systems and Associated Electronics

Installed in the summer of 2004, the house sound system consists of a Left/Right speaker tower and a Center cluster. The system also has four subwoofers enclosures (2 - 18" and 2 - 15" cabinets) as well as a bank of 6 delay speakers in the ceiling of the auditorium. Also, a series of 8 front-fill speakers and 4 side-fill speakers aid in providing uniform SPL and clarity throughout the house. Two speakers located in the proscenium can be used as a simple public address speaker system. Finally, a four-speaker system is available at the mix position as a monitoring/cueing system. These speakers can be independent of the other speakers or can work in tandem. Eastern Acoustic Works (EAW) manufactured all our speaker enclosures.

Left/Right Speaker Towers:

These towers consist of four EAW speakers and ATM Flyware custom-made mounting hardware suspended from chain motors mounted above the proscenium. The system has been tuned specifically to the hall with the bottom of the lowest speaker at 9 feet above the stage floor. The system has been designed to be removable if necessary. Each speaker tower contains the following EAW speaker cabinets:

- 1 EAW Model MQM1343
- 1 EAW Model MQM1364e
- 1 EAW Model MQM1410
- 1 EAW Model MQM1394e

Center Cluster Array:

The center cluster consists of 6 EAW SLAM (small linear array module) speakers. The top 3 boxes are Model KF737s and the bottom 3 boxes are KF730s. This center cluster is also mounted on chain motors above the proscenium and can be removed.

Subwoofers:

The subs for the system are 2 EAW Model SB250Ps and 2 EAW Model SB528zPs. The speakers are stacked on stage against the stage left and stage right proscenium walls and can be removed.

Delay Speakers:

These speakers are permanently mounted in the ceiling approximately 2/3 of the way back in the house. These 6 speakers are EAW Model 2164e enclosures.

Front Fills:

The front-fill speakers consist of 8 EAW Model UB12Se speakers mounted on the pit wall and equally spaced across the front of the stage. These have been designed to be removable.

Side Fills:

Four EAW Model JF80s are mounted on the sidewalls of the house at the widest section of the house to provide fill for seating in those areas. These are permanently mounted.

Public Address Speakers:

These speakers are permanently mounted in the proscenium. They are 2 EAW Model 2166e speakers.

Mix Position Monitoring:

Three speakers comprise this system and can work in tandem with or separately from the main house system. The speakers for this system are 3 EAW Model UB12Se speakers.

Speaker Systems Processing:

XTA Model 224 and 226 Digital Processors digitally control all speakers systems. The amplifiers are Crown CT 600, 1200, 2000 and 4200 series amplifiers. The system also has an Oxmoor Model 4x4T and MDA-16T distribution amplifiers. The entire system can be turned on and off via a power sequencing panel and all preset delay settings can be operated at the house mix position. System delay settings can be overridden if the guest performer wishes to enter his own settings.

Stage Monitor Loudspeakers and Associated Electronics

There are 16 monitor loudspeaker cabinets available: 8 "wedge stage monitors", and 8 "overhead monitors."

Stage Monitor Loudspeaker Cabinets:

The stage monitor inventory consists of 4 EAW SM84 high output two-way stage monitors, and 4 EAW VRM12 two-way stage monitors. The EAW SM84 monitors are bi-amped and incorporate a 4x8" low frequency driver configuration in a split baffle design for the low end and employ a 1.4" exit neodymium compression driver coupled to a 40 degree horizontal by 90 degree vertical horn for highs. The EAW VRM12 monitors are 2-way passive micro-wedges and are a coaxial design with a 12" subwoofer and a 1 x 1" driver, horn loaded.

Overhead Stage Monitors:

These monitors are EAW JF80s mounted to a hanger that can be hung from any batten above the stage. These are two-way full range speakers with 2x6.5" woofers and a 1" exit compression driver containing passive LF/HF crossovers.

Stage Monitor Loudspeaker System Electronics:

Four Crown CT1200 amplifiers located in the sound equipment room power the EAW SM84 monitors system. Two Drive Rack PAs provide the crossover and other processing systems for these amplifiers and monitors. There is also a portable rack of amplifiers available to power the EAW VRM12 stage monitors when all 8 stage monitors are in use. The electronics for this includes 2 Crown Macro-Tech 1202 amplifiers, 2 Crown Macro-Tech 2402 amplifier and 4 DBX 231 dual-channel EQs.

Required Lengths for Snake runs to FOH kill, Mid-House kill, cross-stage and pit

The following lengths are recommended to reach the various locations of sound kills and locations in the main hall (from stage left):

House Sound Kill	325 feet
House Broadway Show Kill	250 feet
Mid-House Sound Kill	200 feet
Cross-Stage Runs	100 feet
Pit	100 feet

Isolated Sound Power Available

A 200 amp company disconnect panel is located downstage left approximately 12 feet up on the wall. A steel platform and ladder is built around it for easy access. Cam or bare wire connections are available as well as turn-arounds for the ground and neutral cams.

Infra-Red Assisted Listening System

The theater is equipped with the Sound Associates Infrared System for use by the hearing impaired. There are six emitters located in the hall and 120 headsets are available for use by the public. The transmitter can be fed from a monitoring mike hung over the stage. The preferred and much more effective method is to receive a direct feed from the console in use to supply the signal for this system.

Microphone Inventory:

In addition to the microphone inventory listed below, there are mic stands, clips, cabling and other accessories available as well.

<u>Microphones</u>	<u>Quantity</u>
Countryman IsoMax E6	2
Neumann KM84	12
Neumann KM83	4
AKG451EB	2
Shure SM18B	3
AKG CK22 Omni Capsule	1
Stereo C-Ducer	1
Mono C-Ducer	1
Crown PCC160	5
Shure SM81	2
Beyer dynamic M500	2
Sennheiser HD-421U	4
Sennheiser MKE-803U	2
Shure SM58	6
Shure SM57	5
Shure SM58 Beta	2
Shure SM57 Beta	2
EV N/D 757B	2
Sony EMC-33F	6
EV RE16	6
EV RE20	3
AKG 414B	2
EV RE55	2
Shure 545SD-LC Microphones	2
Shure MX418SE/C Microphones	2

Wireless Microphone Inventory:

The Civic Center also has two wireless microphone systems available for use.

Shure Wireless Mic System 1 (6 channels)	Quantity
Shure UD4-J4 2 Channel Wireless Receivers	3
Shure U2-J4 Wireless Handheld Microphones	6
Shure U1-J4 Wireless Lavalier Transmitters	6
DPA Lavalier Microphones	6
Shure Handheld Mic Clips	6
Assorted Tie Clips/Accessories	
ATC600 IsoTransformers on each channel	
Shure UA888 Networking System	
Shure Wireless Mic System 2 (6 channels)	
Shure ULXP4 2 Channel Wireless Receivers	3
Shure ULX1-M1 Transmitter	6
Shure Wireless Handheld SM58 capsules	6
Senheiser MKE2 Lavalier Microphones	6
Sennheiser Cardioid Lavalier 6 Microphones	
Shure UA844 Antenna Distribution System	
Shure Active Directional Antennas	
Assorted Mic Clips/Accessories	
Spare Antennas	

WARDROBE

The wardrobe room is located on the lower level. There is direct access from the loading dock area by stairs and freight elevator. The room is equipped with work tables, steamers, irons, ironing boards, portable sink, three washers, and three dryers. In addition there are rolling clothes racks available for use within the halls and each dressing room.

Quick-change booths are available.

DRESSING ROOMS

All dressing rooms are equipped with sinks, showers, and restroom facilities. All dressing rooms are equipped with make-up mirrors and lights with the exception of 108 and 110 which are often used by stage and company and stage managers.

Two "star" dressing rooms are located stage right on the main level. All other dressing rooms are located on the lower level with stair access downstage right, downstage left, and backstage. Freight elevator access for wardrobe trunks, etc. is located backstage in the loading dock area.

Dressing Room locations and approximate capacities are:

#202	Main Level	Star	2 - 3 people
#204	Main Level	Star	2 - 3 people
#101	Lower Level	Chorus	20 people
#102	Lower Level	Chorus	20 people
#103	Lower Level	Principal	3 - 4 people
#104	Lower Level	Principal	3 - 4 people
#105	Lower Level	Principal	3 - 4 people
#106	Lower Level	Principal	3 - 4 people
#108	Lower Level	Office or Dressing Room	
#110	Lower Level	Office or Dressing Room	

All dressing rooms conform to Actors Equity Association Safe and Sanitary Code conditions.

MANAGER INFORMATION**STAGE MANAGER INFORMATION**

There is a portable stage manager desk available stage right and is equipped with a remote intercom system, dressing room paging, cue light system, closed circuit television stage monitor, and lockable storage space.

All dressing rooms, lounges, and production work areas have paging and show program (audio) monitor speakers.

Performers, musicians, and technical crew should enter through the Stage Entrance located on Third Street near Locust. A bulletin board next to the stage entrance is available for use as a callboard.

TELEPHONES

There are telephone lines available for a fee that can be patched to the management offices, dressing rooms, green room, wardrobe room and the back stage area. Contact Production Director for available phone numbers.

INTERNET and DSL

Wireless Internet is available free throughout the building. DSL lines are available for a fee. Contact Production Director for availability.

GREEN ROOM

The Green Room is located stage right and has direct access to the Star dressing rooms, to downstage right, upstage right, and the west lobby.

GENERAL EQUIPMENT**Stage Risers**

Wenger table risers are available in the following sizes:

Height	3'x 6'	3'x 8'	4'x 8'
8"	8	6	8
16"	8	6	8
24"	8	6	8
32"	12	12	18

Orchestra Equipment

A Wenger Orchestra Shell enclosure with two ceiling panels is available. It is possible to set the shell in two different sizes to better accommodate small recitals thru orchestra with choral group. The available orchestra equipment includes:

60	music stands
75	music stand lights
85	orchestra chairs
1	conductor's podium, stand, and rehearsal stool

Pianos

The Civic Center's inventory of pianos is:

Baldwin	Studio Upright
Yamaha	U-1 Upright
Baldwin	9' Concert Grand

Lifts/Ladders

The Civic Center has a Model AWP-40S and Model AWP-30S battery-operated Genie Lifts. The lifts have a capacity of 300 lbs with a vertical extension of 40 feet and 30 feet respectively.

The theatre also maintains as assorted inventory of fiberglass ladders.